



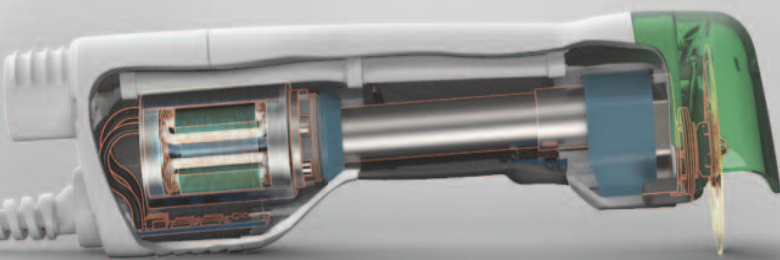
CLEANCAST™

ADVANCED CAST SAW AND DUST EXTRACTION SYSTEM

Introducing the CC7

Evolutionary development

Over many years we have listened to our customers and spent significant time improving the most important aspects of our new CleanCast system. We've added a finger switch located on the handpiece for easy operation and improved ergonomics. A durable PETG, used in baby bottles, has been used for the extraction hood, making it more durable.



Smaller, Lighter, More Powerful

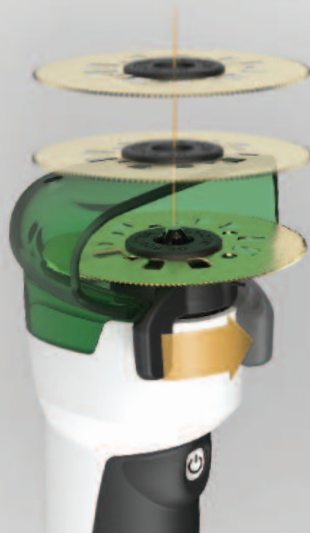
Our engineers have used state of the art brushless motor technology to reduce weight, whilst delivering class leading power of 138 Watts, an increase of 38%. We've improved the motor housing, adding vibration absorbing material and acoustic baffles to reduce noise.

Blade design

Producing an efficient cut starts with the design of the blade, De Soutter Medical have developed a new premium Zirconium nitride blade coating, ensuring each blade lasts longer and will cut faster.



Segmented ZrN blade supplied with every system as standard



The tapered lock

To reduce noise and vibration in our CleanCast system, our engineers used the De Soutter Medical 'tapered lock' design. The 'tapered lock' is a simple principle of applying a wedge to components that need to move in unison, ensuring all lost motion is eliminated. This, in turn, reduces noise and vibration significantly, and allows toolless loading.

CLEANCAST™

ADVANCED CAST SAW AND DUST EXTRACTION SYSTEM



CC7
With extraction



CC8
Non extracted

Handpiece specification

	CC7		CC8	
	2 m hose	4 m hose	2 m cable	4 m cable
Max speed cpm	17000	17000	17000	17000
Power W	138	138	138	138
Output voltage V	12	12	12	12
Weight gms	670	670	634	634
Dims. (mm)	257 x 79 x 69	257 x 79 x 69	219 x 51 x 69	219 x 51 x 69
Order code	1292554	1293224	1292664	1293334

For complete CC7 system, order handpiece, hose kit and extractor.
For complete CC8 system, order handpiece and PS8 Power supply.

PS8 Power supply

Output voltage	12 Vdc
Supply frequency	50 - 60 Hz
Order code	19770

Mains power cordsets - 3 m long	
UK	Order code 8290
Euro	Order code 8300
US/Canada	Order code 8310
Australia/New Zealand	Order code 8320
Swiss	Order code 14700



Extractor specification

Power	800 W
Supply voltage	240 V or 120 V
Maximum Suction	1900 mm H ² O water lift
Filtration	Hepa > 0.3 micron
Dust bag capacity	13 litres
Sound level	79.4 dBA

Extractor 230 V UK plug	Order code 1292884
Extractor 230 V EU plug	Order code 1292994
Extractor 120 V USA plug	Order code 1293004
Extractor 230 V AUS plug	Order code 1293114



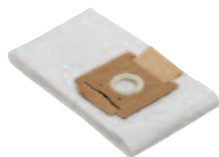
Accessories for CC7 and CC8



2 m Hose kit
Order code 19600
4 m Hose kit
Order code 19800



Extractor Filter
(single item)
Order code 670113



Extractor HEPA dust bag
(pack of 10)
Order code 670123









CC7 vacuum attachment
(with extractor system)
Order code 670733



Cast saw wall mount
for CC8
Order code 19850

CLEANCAST™

SAW BLADES FOR CC7/CC8 CLEANCAST SAWS

	Blade shape	Blade dia. mm			
	Circular	64	19610	19640	19660
	Segment	64	19670	19680	19730*
	Segment	80	19700	19720	19710
			PTFE	TiN	ZrN
POP - Gypsona			Optimal		
Polyester - Deltalite/Benicast/CellaCast			Suitable		
Fibreglass - Deltalite/Scotchcast			Not recommended		

All blades are sold in boxes of 5

*ZrN blade supplied with each cast saw

CONTACT YOUR LOCAL DE SOUTTER MEDICAL REPRESENTATIVE

UNITED KINGDOM

(International head office)
De Soutter Medical Limited
Halton Brook Business Park,
Weston Road, Aston Clinton,
Aylesbury, Bucks HP22 5WF
Tel: +44 (0) 1296 634 000
Fax: +44 (0) 1296 634 033
Email: info@de-soutter.com

BELGIUM

De Soutter Medical Belgium
Bessemersstraat 14
3620 Lanaken
Tel: +32 (0) 89/47 15 37
Fax: +32 (0) 89/70 12 19
Email: belgium@de-soutter.com

ITALY

De Soutter Medical Italia
Località Fornace SNC
27022 Casorate Primo - PV
Tel: +39 (0) 2 9009 4098
Fax: +39 (0) 2 9009 2673
Email: italy@de-soutter.com

AUSTRALIA

De Soutter Medical Australia Pty Ltd
2/12-14 Apollo Drive, Hallam
Victoria 3803
Tel: +61 (0) 3 9702 4441
Fax: +61 (0) 3 9702 4484
Email: australia@de-soutter.com

FRANCE

De Soutter Medical France
1 252 Avenue du Parc des Expositions
33260 La Teste de Buch
Tel: +33 (0) 5 56 54 89 36
Fax: +33 (0) 9 70 61 37 60
Email: france@de-soutter.com

NETHERLANDS

De Soutter Medical Nederland
Gelderlandhaven 2X
3433 PG Nieuwegein
Tel: +31 (0) 85 0491480
Fax: +31 (0) 85 0491489
Email: nederland@de-soutter.com

AUSTRIA

De Soutter Medical Austria
Zweigniederlassung Österreich
Dietrichsteingasse 10,
A-3400 Klosterneuburg
Tel: +43 (0) 676 96 71 770
Fax: +43 (0) 2243 21 656
Email: austria@de-soutter.com

GERMANY

De Soutter Medical Deutschland
Bahnhofstraße 4
D-66625 Nohfelden
Tel: +49 (0) 68 52-99 12 46
Fax: +49 (0) 68 52-99 12 47
Email: deutschland@de-soutter.com

UNITED STATES OF AMERICA

De Soutter Medical USA, Inc.
224 Rolling Hill Road, Suite 12A
 Mooresville, NC 28117
Tel: +1 (704) 655 9040
fax: +1 (704) 987 2035
Email: usa@de-soutter.com

de Soutter
MEDICAL